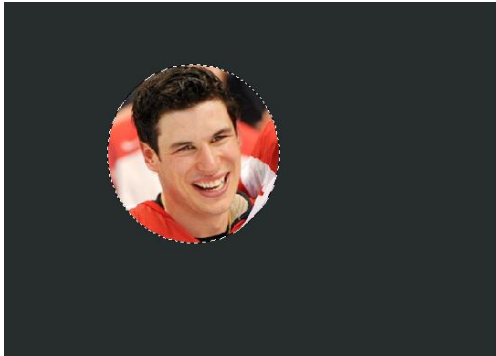


How to Make a Magnifying Glass in Photoshop

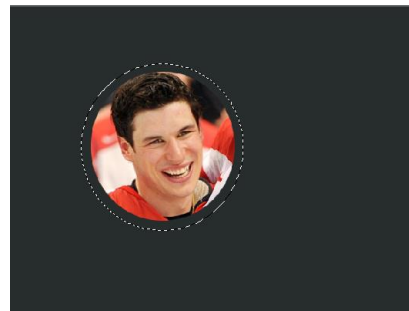
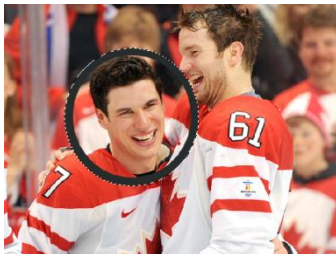
Step 1: Open a photo of your choice. Using the *Elliptical Marquee Tool*, go over the part/ area you want to magnify > Click the *Move Tool* > Filter > Distort > Spherize. (Choose whatever percentage you like, I chose 28 %)

Step 2: Make a new layer. Take the *Elliptical Marquee Tool* and go around the spherized area. Press on the layer and click Ctrl + Shift + I. Then take the *Paint Bucket Tool* and fill it with a colour you choose (colour of magnifying glass).

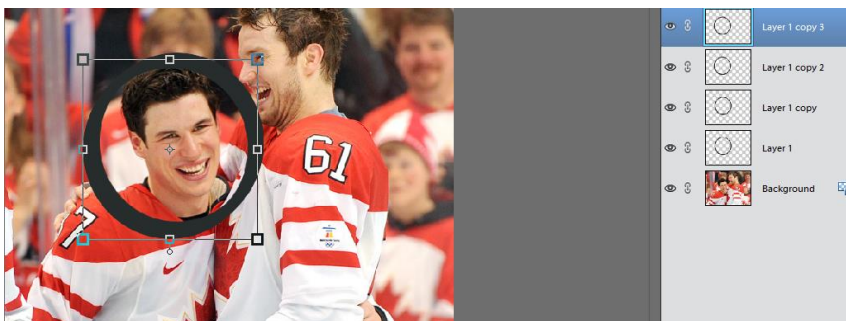


Step 3: Press Ctrl + D to deselect. Take Elliptical Marquee Tool again and pull down around image and make a border.

Press Ctrl + Shift + I. Then Click Delete.



Step Four: Duplicate the Layer. Select the frame of magnifying glass with the Move Tool. Click the down arrow key 3 times and the left arrow key 3 times. (Repeat this step 2 more times)



Step Five: Merge all the layers except for the first

one. Click Filter > Adjustments > Gradient Map (Adjust the gradient the way you like).

Step Six: Merge all layers (except background).

Reflections

Step Seven: Make a new layer. Take the Elliptical Marquee tool and draw an oval shape near the top of frame. With the Paint Bucket Tool, fill it with white. ←

Click Filter > Blur > Gaussian Blur (adjust the settings the way you like and bring the opacity down a bit.) →



Step Eight: Make a new layer. Take Elliptical Marquee Tool and make you circle around the inside of the frame. Click the Gradient Tool and make it foreground (white) to transparent. Set opacity anywhere between 15 – 30 %. Take the Gradient Tool and go over the selection.



Step Nine: Make a new layer. Make one smaller circle with the Elliptical Marquee Tool. With the Paint Bucket Tool, fill with white and lower the opacity (between 25 – 35 %). ↘



Step Ten: Make a new layer. Take the Rectangle Marquee Tool and make the stem for the magnifying glass. Fill it with any colour you choose.



Move the stem to where you like it and then select the frame of magnifying glass, right click and move to front. ←



I think that clipping masks are generally misunderstood, but can be a very powerful tool when it comes to flexibility and non-destructive design.

To use Clipping Masks you need two layers the bottom most layer being the clip (or portion that is viewable) and the upper most layer being the mask (or portion that is overlaying the clip). The mask can also be multiple layers.

A good example is a text layer acting as the clip and a texture being set as the mask. The image is layered above the text and then set to a Layer Mask by [Ctrl + clicking] on the upper layer and choosing "Create Clipping Mask" from the pop menu. To release the mask [Ctrl + Click] the mask layer again and choose "Release Clipping Mask".